

NOTES

THE STRUCTURAL CONCRETE INSERT ASSEMBLY SHALL CONSIST OF THE FOLLOWING COMPONENTS:

- A. FERRULES SHALL BE MADE FROM STEEL MEETING THE REQUIREMENTS OF AASHTO M169, GRADE 12L14 AND SHALL HAVE A MINIMUM LENGTH OF THREADS OF 1 3/4".
- B. 1/4" Ø BOLT WITH WASHER. BOLT SHALL CONFORM TO THE REQUIREMENTS OF ASTM A307. BOLT AND WASHER SHALL BE GALVANIZED. AT THE CONTRACTORS OPTION, STAINLESS STEEL BOLT AND WASHER MAY BE USED AS AN ALTERNATE FOR THE 1/4" Ø GALVANIZED BOLT AND WASHER. THEY SHALL CONFORM TO OR EXCEED THE MECHANICAL REQUIREMENTS OF ASTM A307. THE USE OF THIS ALTERNATIVE SHALL BE APPROVED BY THE ENGINEER. BOLT LENGTH TO BE DETERMINED BY THE CONTRACTOR CONSIDERING VARIABLE THICKNESS OF WEARING SURFACE.
- C. WIRE STRUT SHOWN IN THE CONCRETE INSERT ASSEMBLY DETAIL IS THE MINIMUM ALLOWABLE SIZE AND SHALL HAVE A MINIMUM TENSILE STRENGTH OF 100,000 PSI.
- D. STRUCTURAL CONCRETE INSERT ASSEMBLIES SHALL BE HOT-DIP GALVANIZED IN ACCORDANCE WITH AASHTO M111.

THE COST OF THE STRUCTURAL CONCRETE INSERT ASSEMBLY, COMPLETE IN PLACE, SHALL BE INCLUDED IN THE UNIT CONTRACT PRICE BID FOR 3'-0" X 1'-9" PRESTRESSED CONCRETE CORED SLABS.

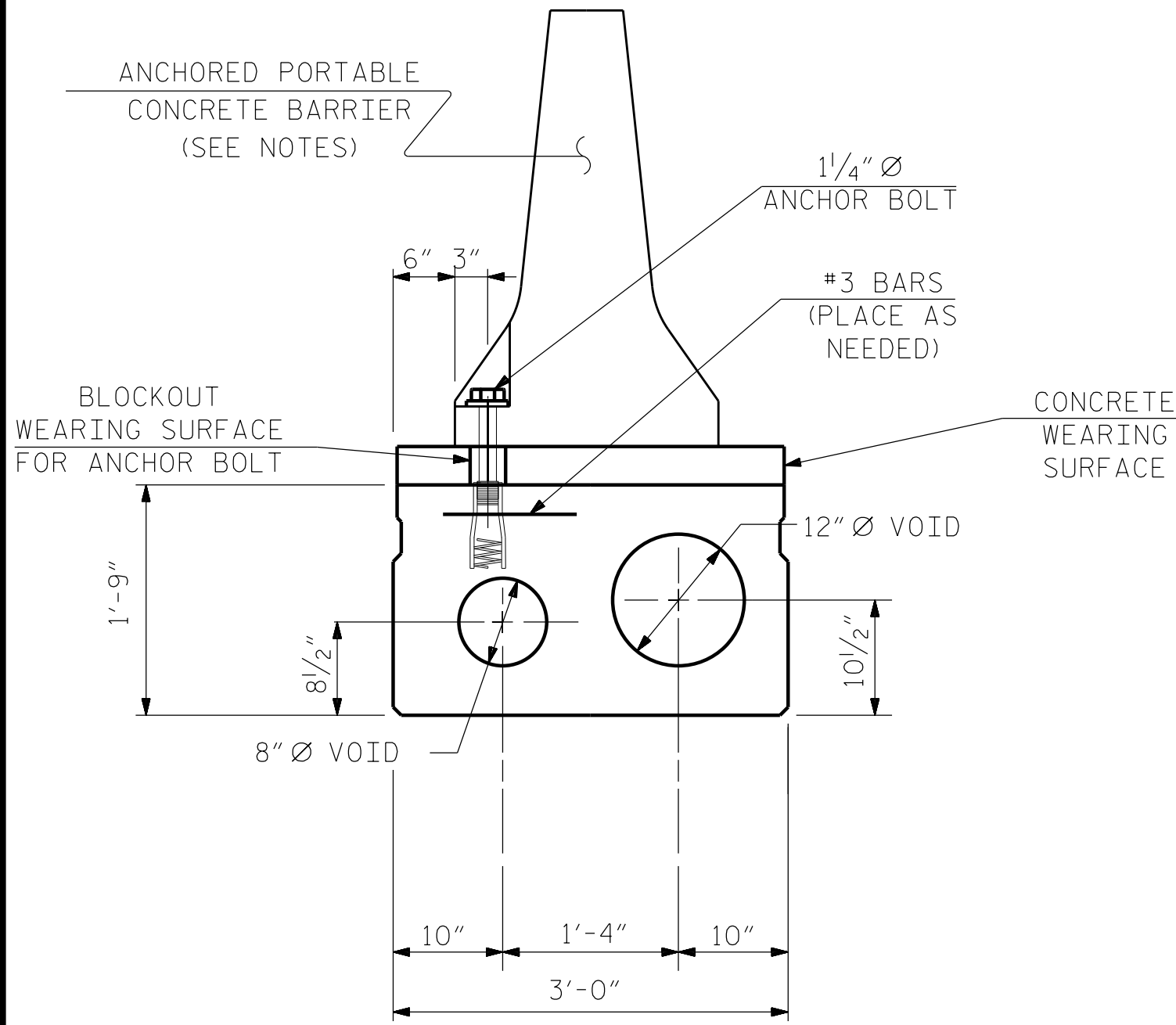
TO FACILITATE PLACEMENT OF THE STRUCTURAL CONCRETE INSERT ASSEMBLIES, #3 BARS MAY BE TIED TO THE ON #4 B7 BARS IN THE CORED SLAB UNITS. THE COST OF THE #3 BARS SHALL BE INCLUDED IN THE UNIT CONTRACT PRICE BID FOR 3'-0" X 1'-9" PRESTRESSED CONCRETE CORED SLABS.

STIRRUPS IN THE CORED SLAB UNITS MAY BE SHIFTED SLIGHTLY AS NECESSARY TO CLEAR STRUCTURAL CONCRETE INSERT ASSEMBLIES.

FERRULES TO BE PLUGGED DURING CASTING OF THE CORED SLAB UNITS AS RECOMMENDED BY THE MANUFACTURER. PROVIDE BLOCKOUT IN WEARING SURFACE AT EACH INSERT LOCATION.

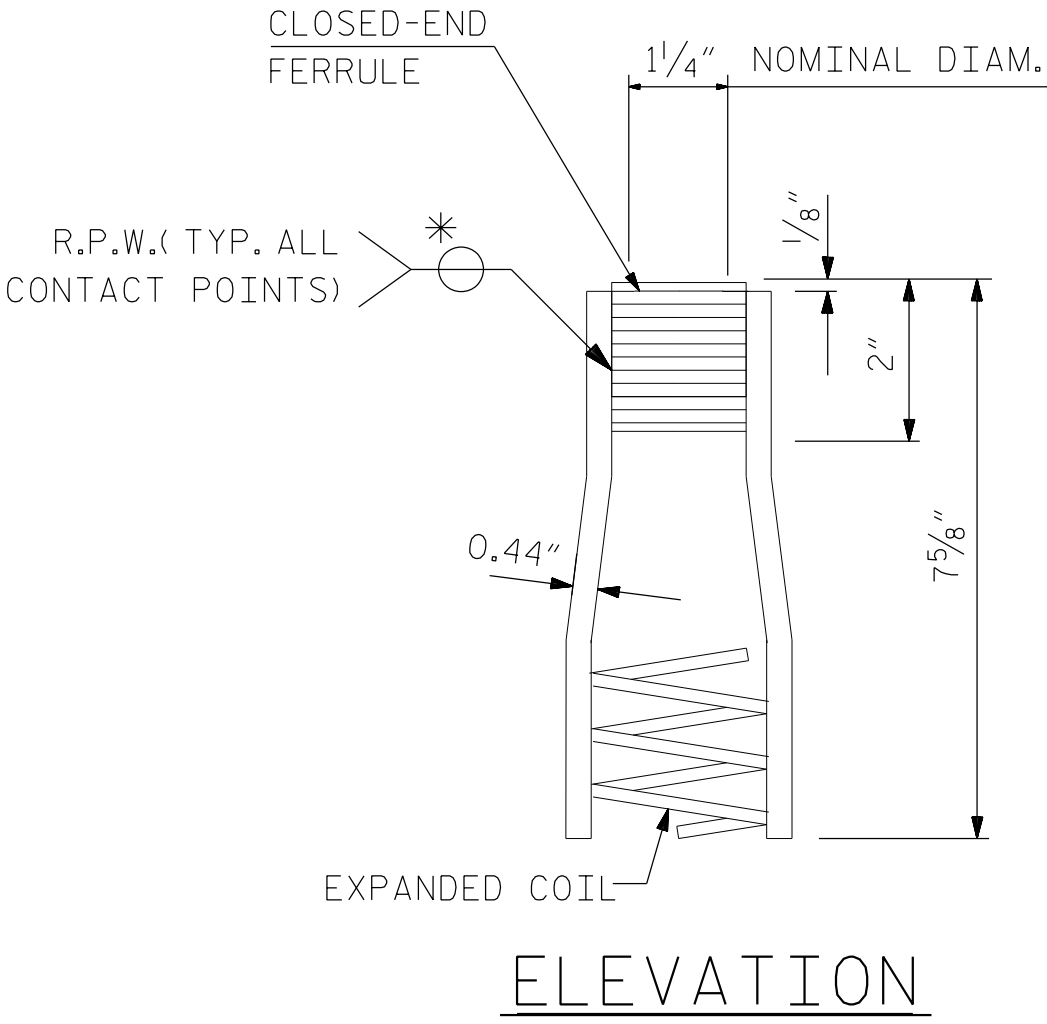
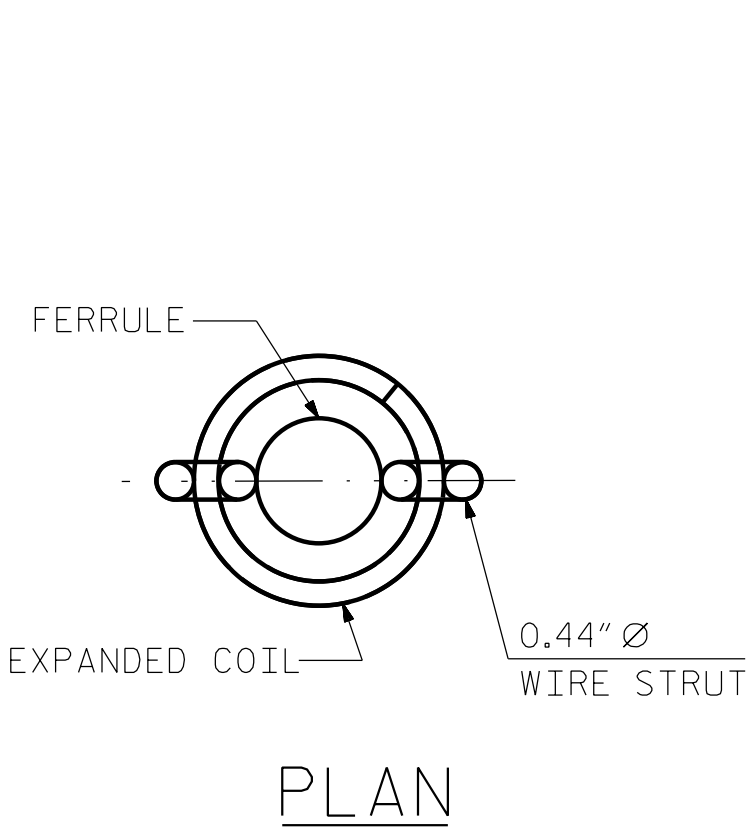
ANCHORED PORTABLE CONCRETE BARRIERS SHALL BE AS SPECIFIED IN ROADWAY STANDARD DRAWING NO. 1170.01. SEE TRAFFIC CONTROL PLANS.

AFTER REMOVAL OF ANCHORED PORTABLE CONCRETE BARRIER, THE STRUCTURAL CONCRETE INSERTS AND BLOCKOUTS IN WEARING SURFACE SHALL BE FILLED WITH GROUT.



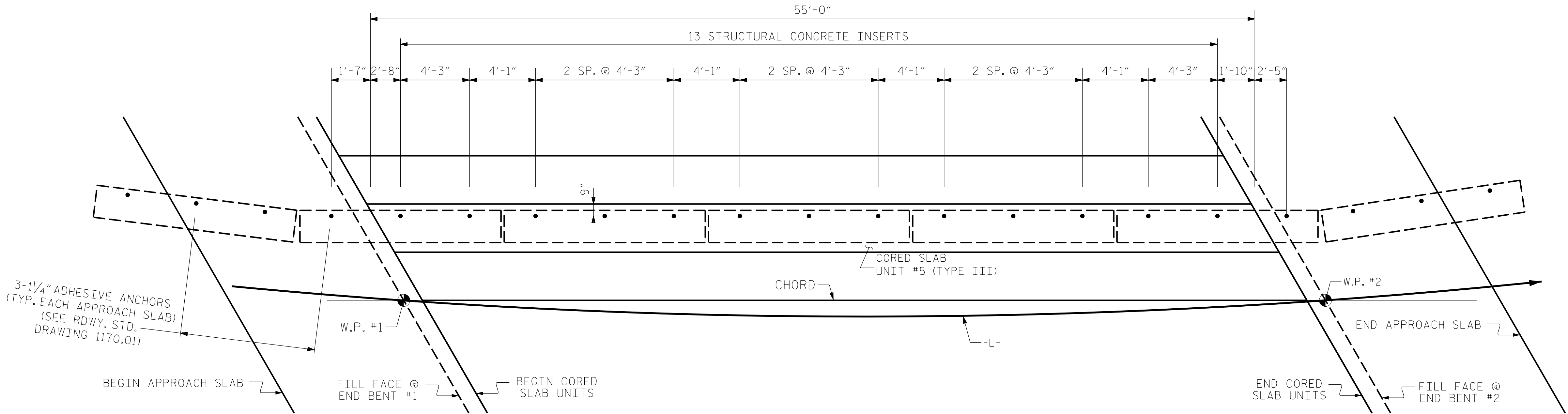
CONCRETE INSERT LOCATION

(FOR 21" CORED SLAB, TYPE III UNIT)



STRUCTURAL CONCRETE INSERT

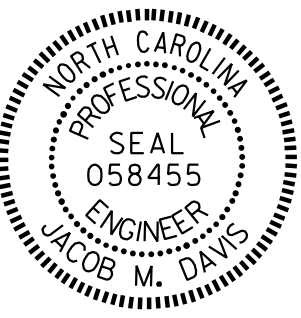
* EACH WELDED ATTACHMENT OF WIRE TO FERRULE SHALL DEVELOP THE TENSILE STRENGTH OF THE WIRE



CONCRETE INSERT SPACING

PROJECT NO. BP14.R006
POLK COUNTY
STATION: 12+92.50 -L-

REVISIONS						SHEET NO.	
NO.	BY:	DATE:	NO.	BY:	DATE:	S-8	
1			3			TOTAL SHEETS	
2			4			20	



DOCUMENT NOT CONSIDERED FINAL
UNLESS ALL SIGNATURES COMPLETED

DRAWN BY :	J. M. DAVIS	DATE :	7/23
CHECKED BY :	R. C. LARSON	DATE :	7/23
DESIGN ENGINEER OF RECORD:	R. C. LARSON	DATE :	7/23